

FOR SALE

10.1 ACRES - McAllen, TX

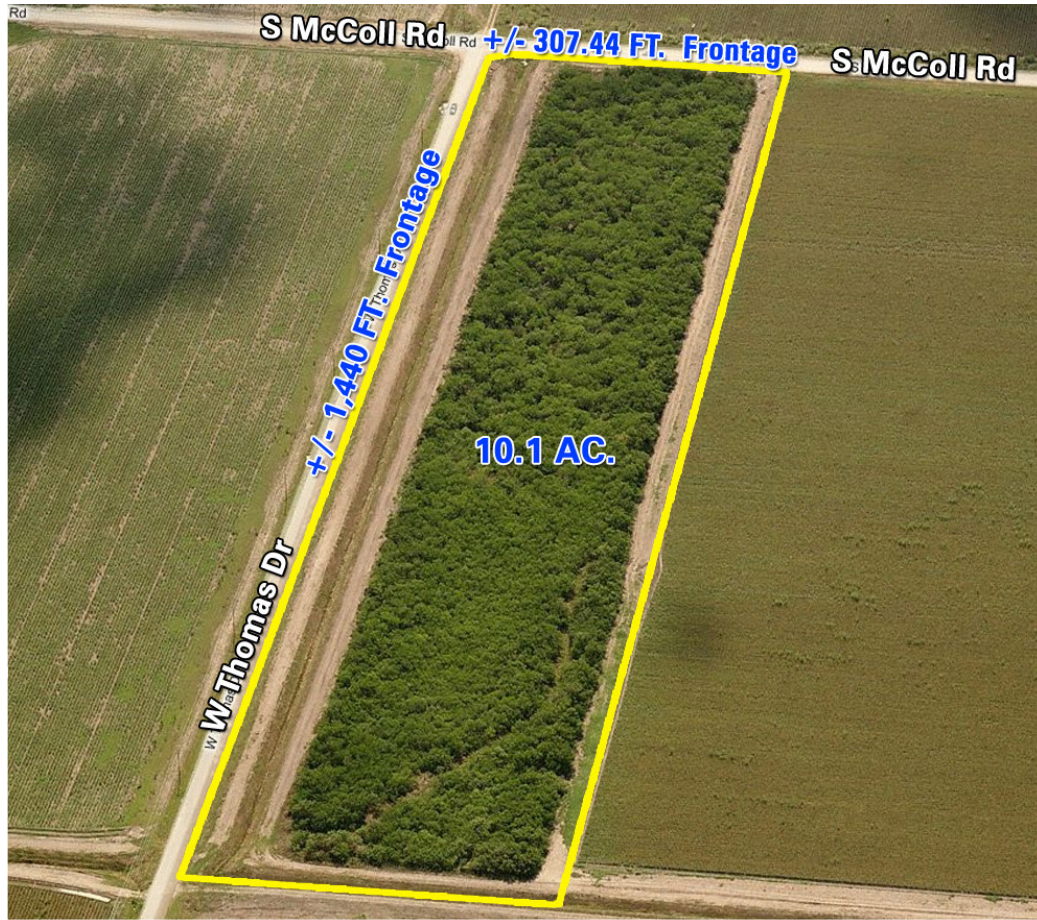
PROPERTY DESCRIPTION

- Approximately 10.1 Acres (440,000 SF)
- Located on the northeast corner of the new S. McColl Road and W. Thomas Drive, Hidalgo County, McAllen, TX
- 307.44' Frontage on McColl Road with curb, gutter and cut for driveway access.
- 1,440' Frontage on Thomass Road with multiple driveway access.
- Drainage District #2 is currently planning the relocation of the storm drainage currently along Thomas Road to a site off of this property but with a 75 ft. wide proposed drain ditch at the far east end of the property. McAllen City water and sewer to be available in 2014 / 2015.

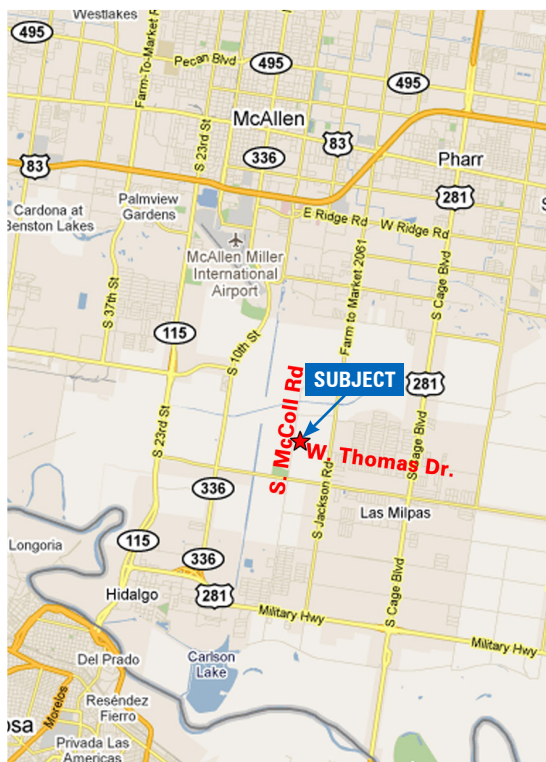
SALE PRICE

\$675,000

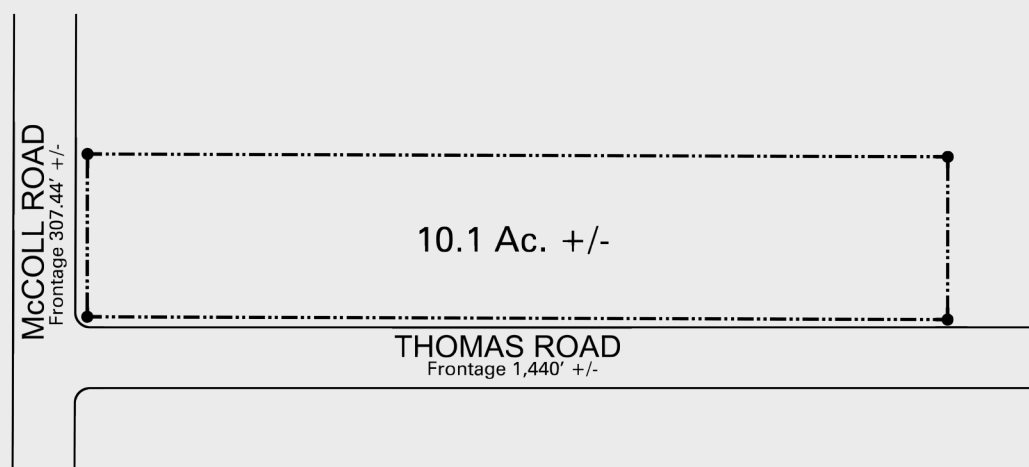
Terms may be arranged with approved credit of 50% down and the balance paid over 3 years



LOCATION MAP



PLAT MAP



Acquisition - Development - Management Since 1957